



SPARE PARTS LIST

for ROTAX engine

Type **348 E MIL**



No.: **844**

edition: **05 1993**



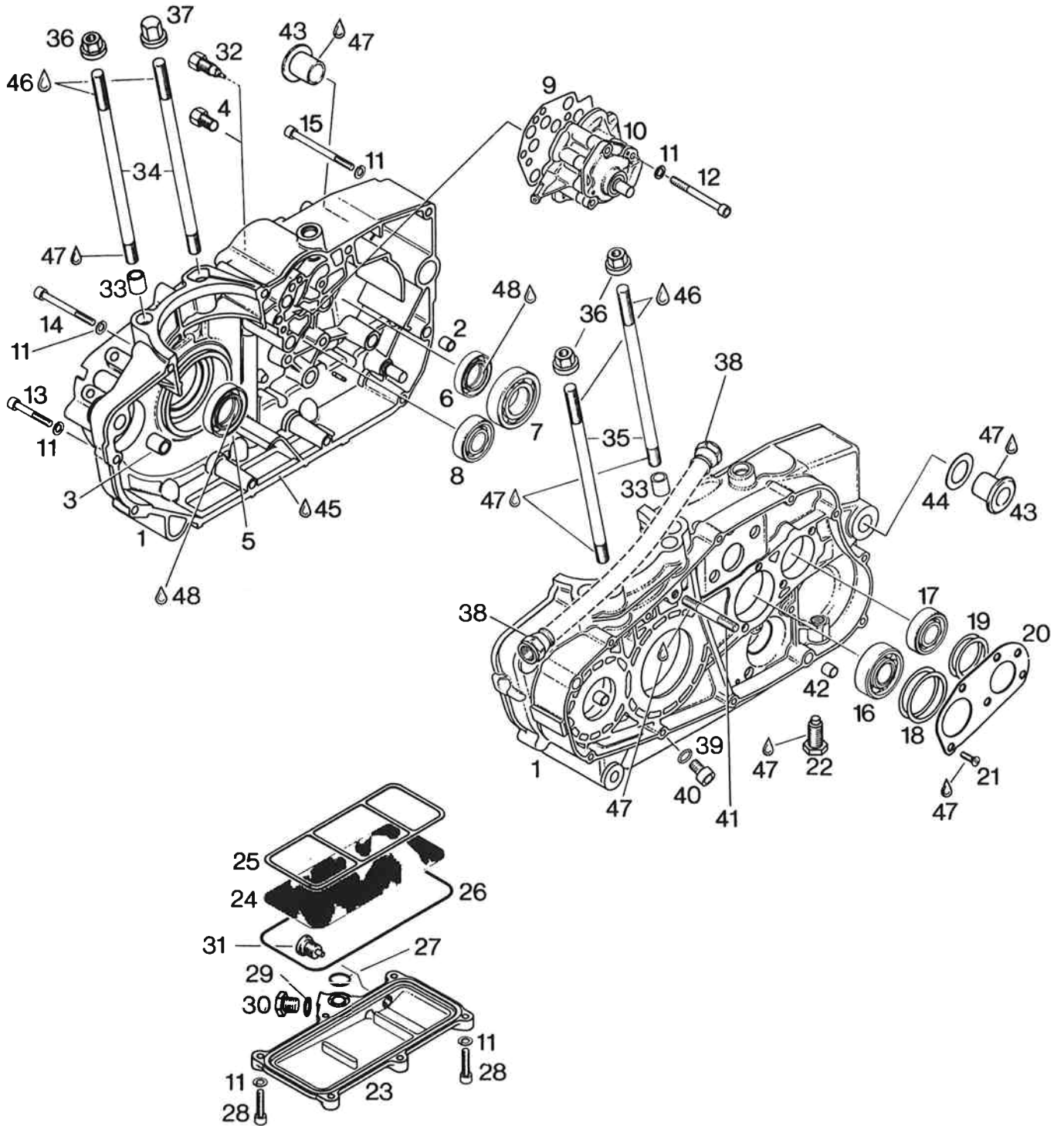
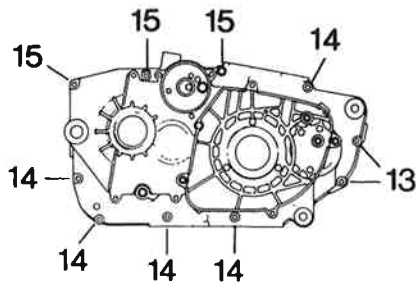
BOMBARDIER-ROTAX GMBH
MOTORENFABRIK

A-4623 GUNSKIRCHEN - AUSTRIA
Telefon: ..43(0)7246-271-0*, Telefax: ..43-(0)7246-370
Telex: 25546 brgk a, Telegr.: Bombrotax Gunskirchen



TABLE OF CONTENTS

PAGE	CHAPTER
3	Crankcase 1
7	Oil pump 2
9	Crankshaft, balancer-and starter drive, piston, cylinder 3
13	5-speed transmission..... 4
17	Clutch, kick start..... 5
21	Clutch cover, electric starter 6
25	Cylinder head, camshaft, valve cover 7
29	Valves, rocker arms, adjustment screws 8
31	Timing belt housing, timing belt cover 9
33	Camshaft drive..... 10
35	Ignition unit 12 V 190 W 11
37	Single parts of electric starter 293 151 12
39	Valve, oil filter element, ignition cover 13
43	Repair tools, gasket sets 14

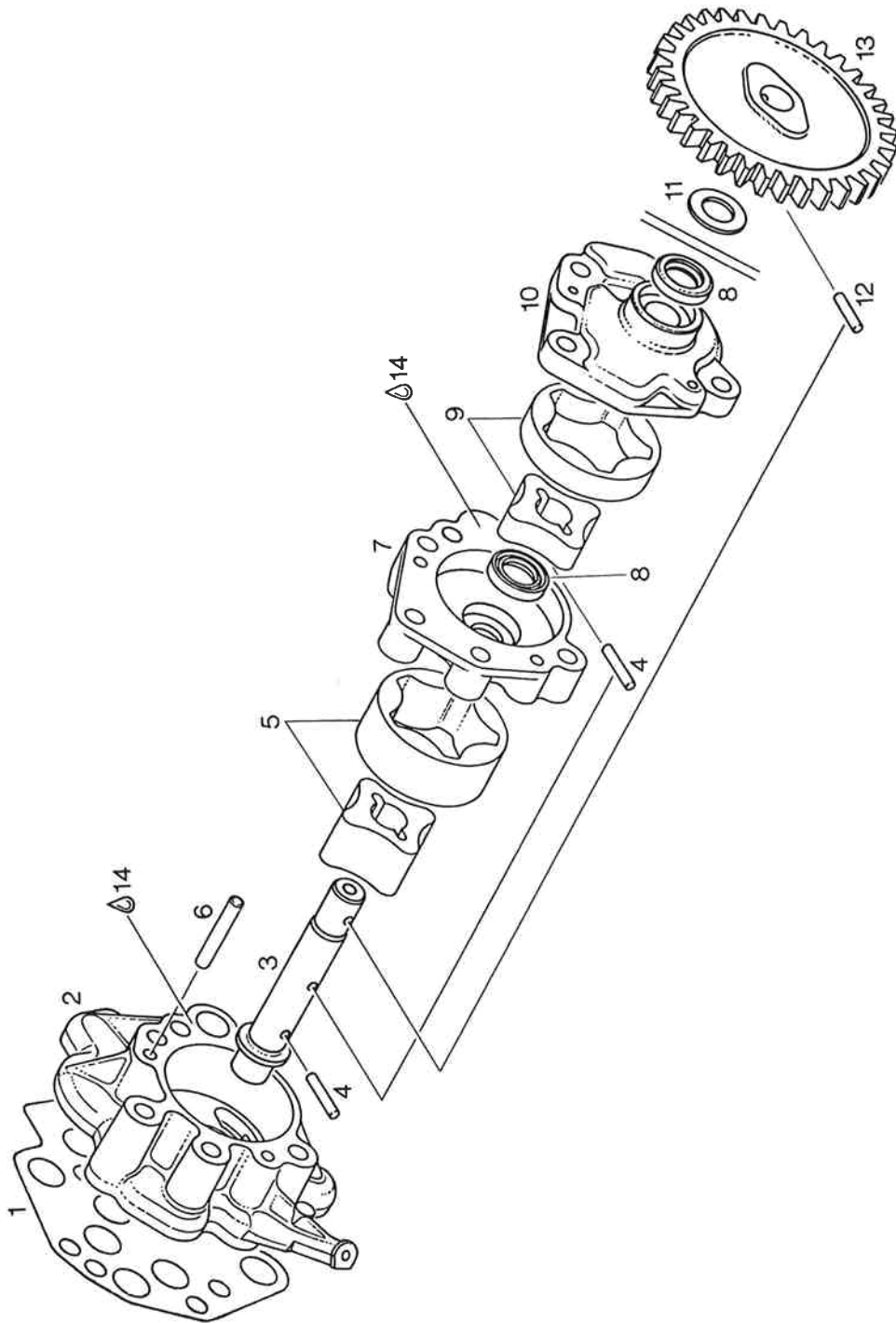


CRANKCASE

ILL. NO.	PART NO.	D E S C R I P T I O N	QTY.
1 - 3	293 798	CRANKCASE ASSY.....	1
2	229 140	DOWEL 9,8X10.....	1
3	229 160	DOWEL 13,8X15.....	1
4	241 905	PLUG SCREW M10X10..... FOR VERSION WITHOUT NEUTRAL INDICATOR	1
5	850 055	OIL SEAL 30X47X7/7,5..... FOR CRANKSHAFT, MAGNETO SIDE	1
6	230 395	OIL SEAL 25X40X7..... FOR MAIN SHAFT	1
7	232 092	BALL BEARING 205 R20.30/25-52-15..... FOR MAIN SHAFT, MAGNETO SIDE	1
8	932 815	BALL BEARING 6303E C3, 17-47-14..... FOR CLUTCH SHAFT, MAGNETO SIDE	1
9	250 370	GASKET..... FOR VERSION WITHOUT NEUTRAL INDICATOR	1
10	 OIL PUMP ASSY. (ONLY SINGLE PARTS ARE AVAILABLE, SEE CHAPTER OIL PUMP)	1
11	945 751	LOCK WASHER A6.....	19
12	240 370	ALLEN SCREW M6X60.....	3
13	241 816	ALLEN SCREW M6X40.....	2
14	240 371	ALLEN SCREW M6X60.....	5
15	241 871	ALLEN SCREW M6X70.....	3
16	932 430	BALL BEARING 6204 TNH, 20-47-14..... FOR CLUTCH SHAFT, CLUTCH SIDE	1
17	932 033	BALL BEARING 6203 TNHC3 17-40-12..... FOR MAIN SHAFT, CLUTCH SIDE	1
18	227 610	SHIM 40/46,5/0,5..... FOR CLUTCH SHAFT	AS REQ
18	227 611	SHIM 40/46,5/0,3..... FOR CLUTCH SHAFT	AS REQ

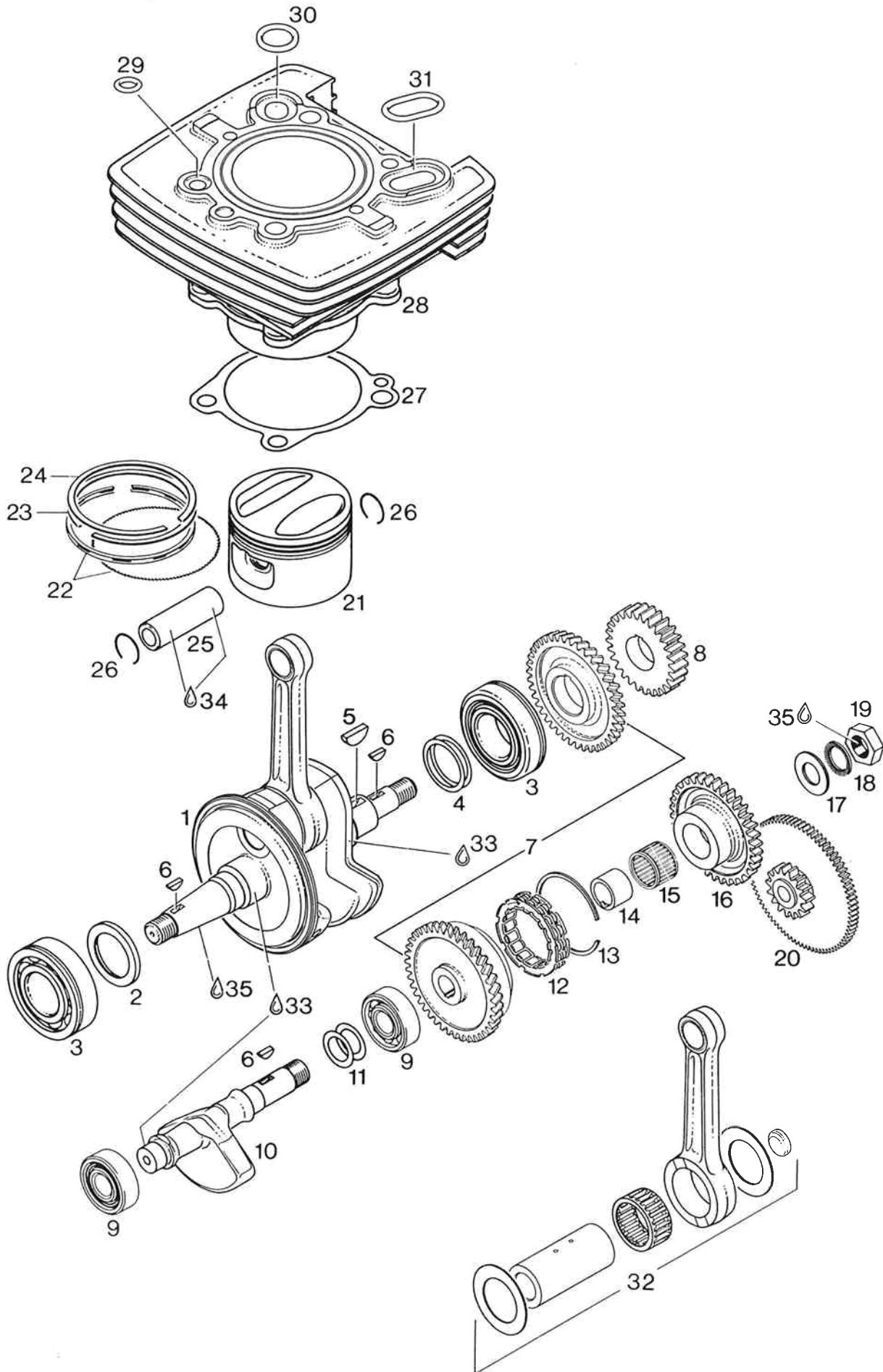
ILL. NO.	PART NO.	DESCRIPTION	QTY.
18	227 612	SHIM 40/46,5/0,1..... FOR CLUTCH SHAFT	AS REQ
19	227 520	SHIM 34/39,5/0,5..... FOR MAIN SHAFT	AS REQ
19	227 521	SHIM 34/39,5/0,3..... FOR MAIN SHAFT	AS REQ
19	227 522	SHIM 34/39,5/0,1..... FOR MAIN SHAFT	AS REQ
20	227 110	RETAINING PLATE.....	1
21	940 315	COUNTERSUNK SCREW M5X12..... TIGHTENING TORQUE 5 NM (44 IN.LB.)	4
22	241 777	HEX.SCREW M12..... TIGHTENING TORQUE 75 NM (660 IN.LB.) FOR KICKSTARTER	1
23	212 595	OIL SUMP COVER.....	1
24	256 160	OIL SIEVE.....	1
25	230 840	GASKET.....	1
26	831 762	O-RING 145-2,5.....	1
27	230 880	O-RING 13,3-2,4.....	1
28	840 861	ALLEN SCREW M6X25.....	6
29	250 010	GASKET RING C 12X18.....	1
30	241 401	HEX.SCREW M12X12.....	1
31	241 782	MAGNETIC DRAIN PLUG M12X1,5.....	1
32	241 850	CONTACT SCREW M10 ASSY.,.....	1
33	229 160	DOWEL 13,8X15.....	2
34	240 440	STUD M10X197..... MAGNETO SIDE	2
35	240 430	STUD M10X185..... CLUTCH SIDE	2
36	242 690	HEX. NUT M10..... TIGHTENING TORQUE 40 NM (355 IN.LB.)	3
37	242 695	CAP NUT M10..... TIGHTENING TORQUE 40 NM (355 IN.LB.)	1
38	 OIL LINE, NOT SUPPLIED FROM ROTAX	1

ILL. NO.	PART NO.	D E S C R I P T I O N	QTY.
39	950 141	GASKET RING A 8X13.....	1
40	841 521	ALLEN SCREW M8X12.....	1
41	940 370	STUD M8X61/15.....	1
42	229 140	DOWEL 9,8X10.....	2
43	247 320	SLEEVE.....	2
44	246 150	SHIM 16,3/25,8/0,3.....	AS REQ
44	246 151	SHIM 16,3/25,8/0,5.....	AS REQ
45	899 784	LOCTITE 574 ORANGE 50 CC., SEALING COMPOUND	AS REQ
46	297 433	MOLYKOTE G-N 50 GR., SLIDE PASTE.....	AS REQ
47	899 785	LOCTITE 221 VIOLET 10 CC., LOW STRENGTH BOND	AS REQ
48	 BP-ENERGREASE LS 3	AS REQ



OIL PUMP

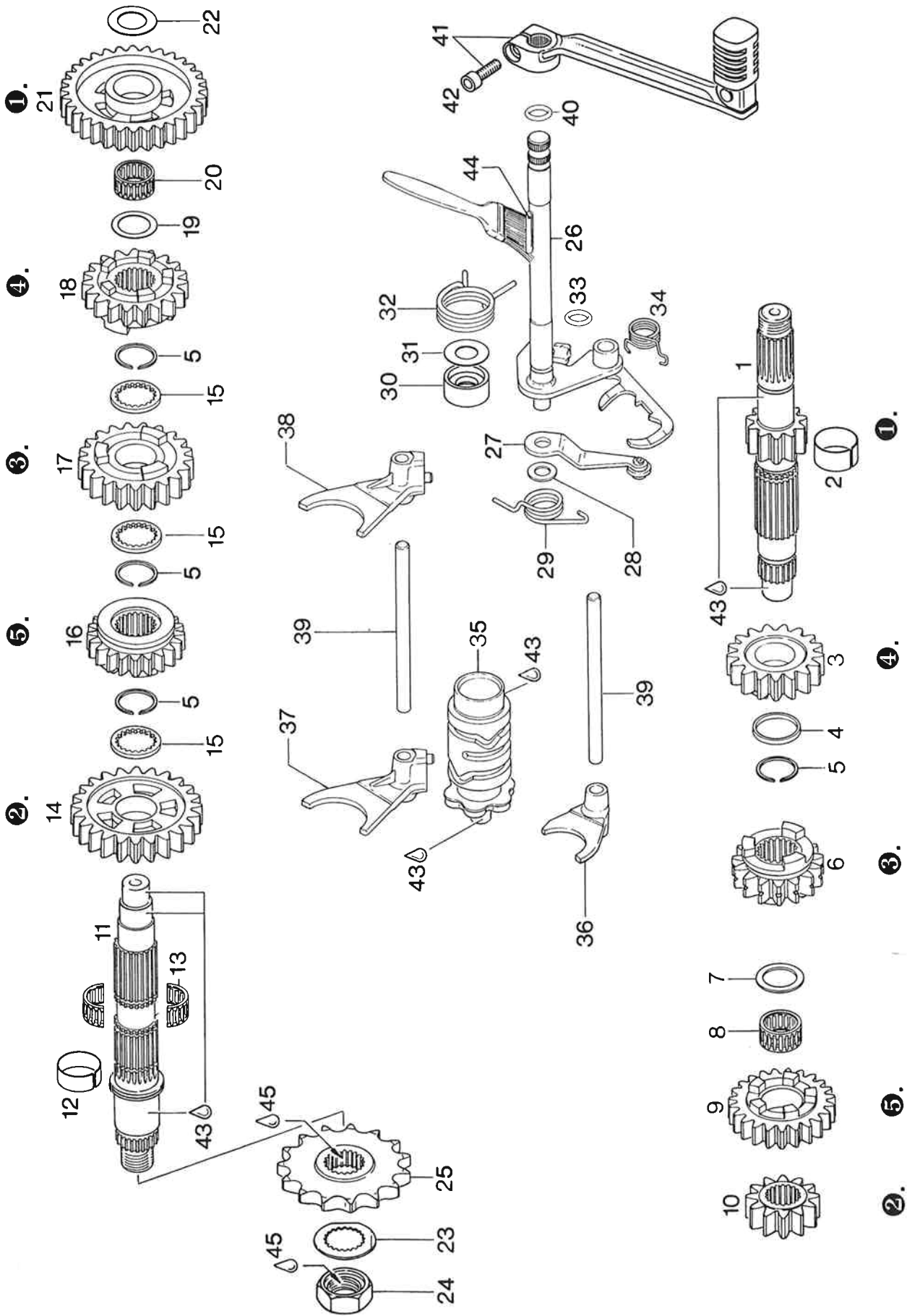
ILL. NO.	PART NO.	D E S C R I P T I O N	QTY.
1	250 370	GASKET.....	1
2	212 569	SUCTION PUMP HOUSING ASSY.,.....	1
3	237 647	PUMP SHAFT.....	1
4	232 980	NEEDLE PIN 3X15,8.....	2
5	256 137	SUCTION INNER AND OUTER ROTOR.....	1
6	232 970	NEEDLE PIN 4X25,8.....	2
7	212 572	PRESSURE PUMP HOUSING.....	1
8	230 870	OIL SEAL 11X17X4.....	2
9	256 117	PRESSURE INNER AND OUTER ROTOR.....	1
10	212 580	PUMP COVER.....	1
11	827 590	THRUST WASHER 10,1/17/1.....	AS REQ
12	932 840	NEEDLE PIN 3X19,8 G2.....	1
13	235 777	PUMP GEAR 27 T.,.....	1
14	899 784	LOCTITE 574 ORANGE 50 CC.,..... SEALING COMPOUND	AS REQ



CRANKSHAFT, BALANCER- AND STARTER DRIVE, CYLINDER,
PISTON

ILL. NO.	PART NO.	D E S C R I P T I O N	QTY.
1	294 045	CRANKSHAFT ASSY.,..... STROKE 70,4 MM (2,7716 INCH)	1
2	247 390	DISTANCE RING 35,2/50/4.....	1
3	832 235	BALL BEARING 6207E TNH, 35-72-17.....	2
4	927 400	SHIM 35,4/43/0,1.....	AS REQ
4	927 401	SHIM 35,4/43/0,2.....	AS REQ
5	946 015	WOODRUFF KEY 6X9.....	1
6	246 570	WOODRUFF KEY 4X5.....	3
7	293 458	PRIMARY DRIVE ASSY.,..... REPLACE ONLY BOTH GEARS TOGETHER	1
8	293 490	PRIMARY DRIVE ASSY.,..... REPLACE ONLY DRIVE GEAR WITH CLUTCH DRUM ASSY.,	1
9	932 095	BALL BEARING 6304E TNH, 20-52-15.....	2
10	237 885	BALANCE SHAFT.....	1
11	944 461	SHIM 20,5/30/0,3.....	AS REQ
11	944 462	SHIM 20,5/30/0,5.....	AS REQ
11	944 465	SHIM 20,5/30/0,15.....	AS REQ
12	259 075	SPRAG CLUTCH 45,665X62,332X13.....	1
13	245 620	SNAPRING 62.....	1
14	232 165	BUSHING.....	1
15	232 890	NEEDLE BEARING 25X29X17.....	1
16	234 353	FREE WHEEL GEAR 37 T.,.....	1
17	227 230	THRUST WASHER 18,2/34/2.....	1
18	245 720	FRICTION WASHER VS18.....	1
19	242 790	HEX. NUT M18X1,5..... TIGHTENING TORQUE 70 NM (660 IN.LB.)	1
20	234 052	IDLE GEAR 81/15 T.,.....	1

ILL. NO.	PART NO.	DESCRIPTION	QTY.
21 - 24	295 245	PISTON ASSY., 79,50/79,51 MM..... WITH RINGS, STANDARD "A" 79,50 STANDARD "B" 79,51	1
22	215 400	OIL SCRAPER RING 79,5 MM..... STANDARD	1
23	215 420	TAPERED COMPRESSION RING 79,5 MM..... STANDARD	1
24	215 590	RECTANGULAR RING 79,5/72,9X1,5..... STANDARD	1
25	216 115	PISTON PIN 22X15X55.....	1
26	245 430	CIRCLIP 22..... ATTENTION: USE ONLY ONCE FOR FITTING, USE TOOL 877 017	2
27	230 825	GASKET 0,5.....	1
28	223 161	CYLINDER..... 'A' 79,50 - 79,512 MM 'B' 79,512 - 79,524 MM	1
29	250 290	O-RING 12-3.....	1
30	250 300	O-RING 23,4-3,53.....	1
31	250 320	O-RING 31,34-3,53.....	1
32	297 431	LOCTITE ANTI-SEIZE 10 GR.,..... TO PREVENT METAL GALLING	AS REQ
33	297 433	MOLYKOTE G-N 50 GR., SLIDE PASTE.....	AS REQ
34	899 785	LOCTITE 221 VIOLET 10 CC.,..... LOW STRENGTH BOND	AS REQ

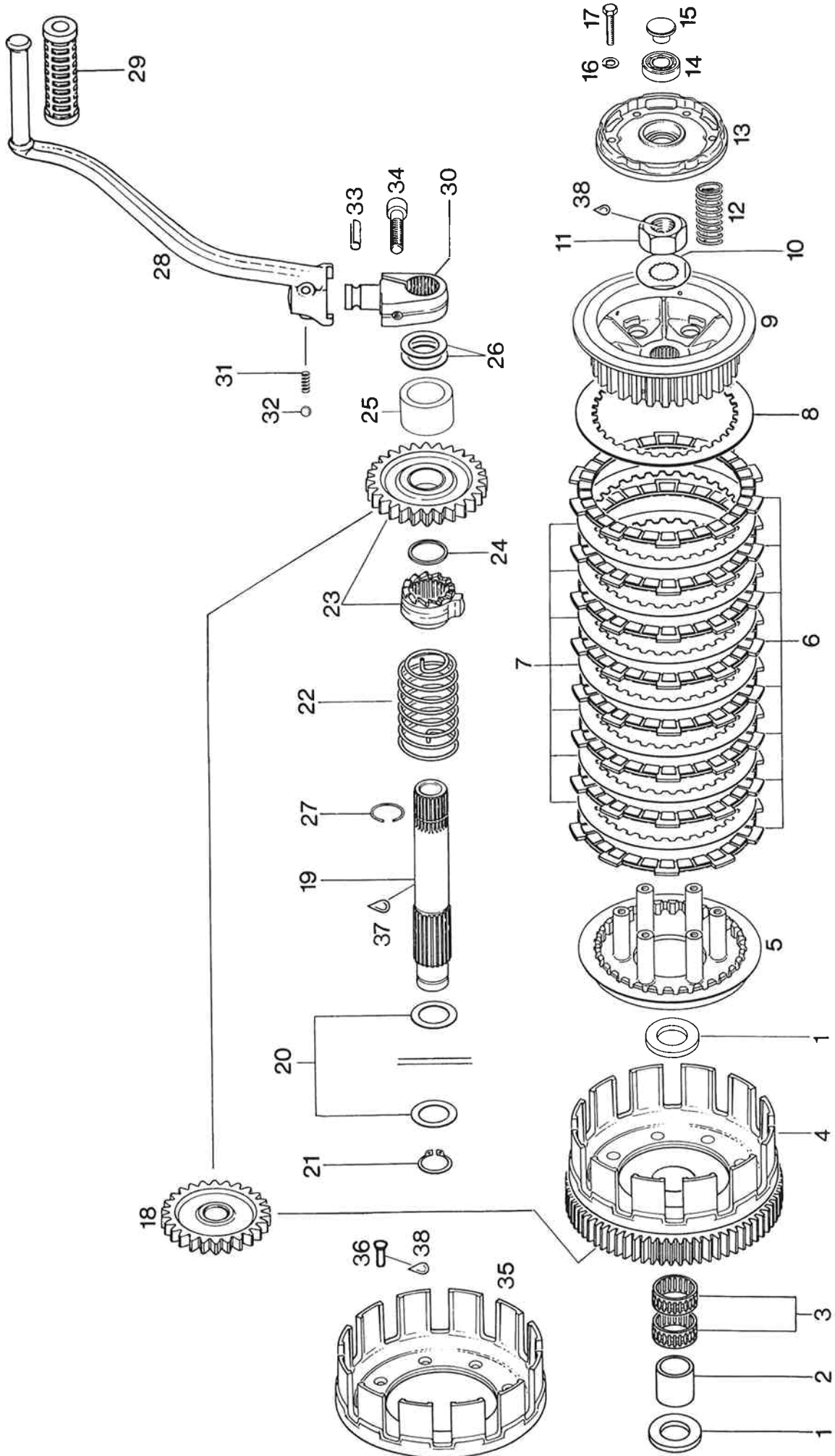


5-SPEED TRANSMISSION

ILL. NO.	PART NO.	DESCRIPTION	QTY.
1 - 24	281 068	TRANSMISSION SET, 5 SPEED.....	1
1	237 712	CLUTCH SHAFT 11 T.,.....	1
2	233 510	BUSHING 22,8X24X11,7..... CLUTCH SHAFT	1
3	235 620	FREE PINION 17 T.,..... 4TH SPEED, CLUTCH SHAFT	1
4	227 080	THRUST WASHER 22/27,5/2,3..... CLUTCH SHAFT	1
5	245 340	SNAPRING 24.....	4
6	235 603	GEAR PINION 15 T.,..... 3RD SPEED, CLUTCH SHAFT	1
7	227 445	THRUST WASHER 21,2/27,5/1..... CLUTCH SHAFT	1
8	232 805	NEEDLE BEARING 21X25X13..... CLUTCH SHAFT	1
9	235 665	FREE PINION 23 T.,..... 5TH SPEED, CLUTCH SHAFT	1
10	235 644	FIXED GEAR 12 T.,..... 2ND SPEED, CLUTCH SHAFT	1
11	237 720	MAIN SHAFT.....	1
12	233 500	BUSHING 23,8X25X9,8..... MAIN SHAFT	1
13	232 800	NEEDLE BEARING 21X25X13..... MAIN SHAFT	1
14	235 654	FREE PINION 24 T.,..... 2ND SPEED, MAIN SHAFT	1
15	227 465	THRUST WASHER 22/30/2,6..... MAIN SHAFT	3
16	235 113	GEAR PINION 21 T.,..... 5TH SPEED, MAIN SHAFT	1
17	235 610	FREE PINION 21 T.,..... 3RD SPEED, MAIN SHAFT	1
18	235 632	GEAR PINION 19 T.,..... 4TH SPEED, MAIN SHAFT	1

ILL. NO.	PART NO.	DESCRIPTION	QTY.
19	944 468	THRUST WASHER 20,5/30/1..... MAIN SHAFT	1
20	232 790	NEEDLE BEARING 20X24X12..... MAIN SHAFT	1
21	235 527	FREE PINION 32 T.,..... 1ST SPEED, MAIN SHAFT	1
22	227 430	THRUST WASHER 17,2/30/1..... MAIN SHAFT	1
23	245 390	TAB WASHER NA24..... MAIN SHAFT LOCKING	1
24	242 650	HEX. NUT M20X1,5..... MAIN SHAFT TIGHTENING TORQUE 120 NM (1060 IN.LB.)	1
25	236 021	SPROCKET 15 T, 5/8X1/4X10,16..... THIS PART IS MOUNTED AS STANDARD	1
25	236 029	SPROCKET 13 T., 5/8X1/4X10,16.....	1
25	236 020	SPROCKET 14 T., 5/8X1/4X10,16.....	1
25	236 022	SPROCKET 16 T., 5/8X1/4X10,16.....	1
25	236 023	SPROCKET 17 T., 5/8X1/4X10,16.....	1
25	236 024	SPROCKET 18 T., 5/8X1/4X10,16.....	1
25	236 025	SPROCKET 19 T., 5/8X1/4X10,16.....	1
25	236 026	SPROCKET 20 T., 5/8X1/4X10,16.....	1
26	237 636	SHIFT SHAFT WITH PAWL ASSY.,.....	1
27	248 925	INDEX LEVER ASSY.,.....	1
28	827 590	THRUST WASHER 10,1/17/1.....	1
29	239 820	INDEX SPRING.....	1
30	247 570	SPACER.....	1
31	946 870	WASHER 14,5/22,5/1.....	1
32	239 640	SPRING.....	1
33	250 460	O-RING 11-2,7.....	1
34	239 830	SPRING.....	1
35	258 797	SHIFT DRUM ASSY.,.....	1

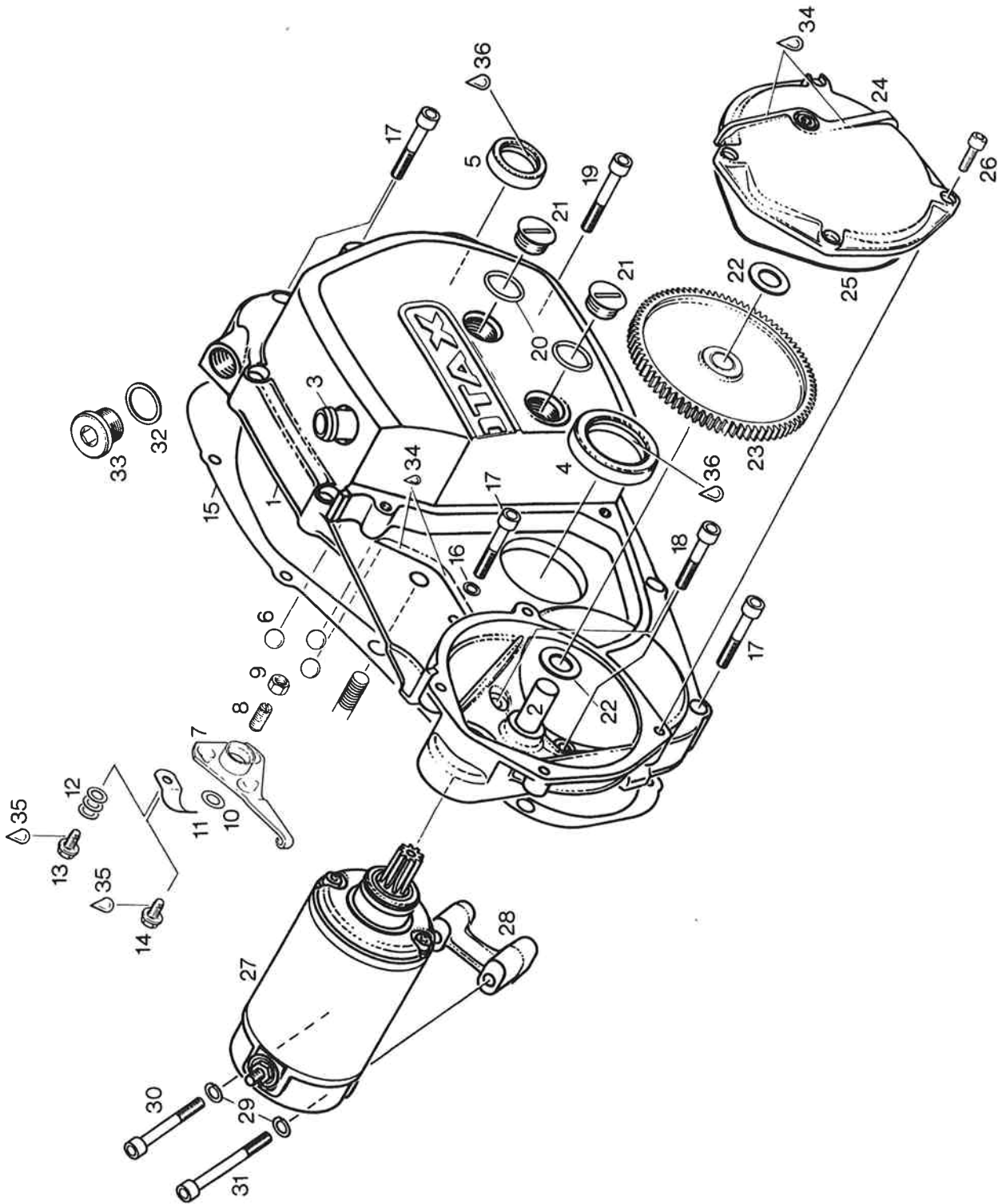
ILL. NO.	PART NO.	D E S C R I P T I O N	QTY.
36	258 775	SHIFT FORK ASSY.,..... SHIFTING 4TH - 5TH GEAR	1
37	258 765	SHIFT FORK ASSY.,..... SHIFTING 2ND GEAR	1
38	258 755	SHIFT FORK ASSY.,..... SHIFTING 1ST - 3RD GEAR	1
39	258 780	GUIDE PIN.....	2
40	430 110	O-RING 10X2,7.....	1
41 - 42	248 260	SHIFT LEVER ASSY.,.....	1
42	241 930	ALLEN SCREW M6X20.....	1
43	297 431	LOCTITE ANTI-SEIZE 10 GR.,..... TO PREVENT METAL GALLING	AS REQ
44	 BP-ENERGREASE LS3	AS REQ
45	899 785	LOCTITE 221 VIOLET 10 CC.,..... LOW STRENGTH BOND	AS REQ



CLUTCH, KICK START

ILL. NO.	PART NO.	D E S C R I P T I O N	QTY.
1	227 600	THRUST WASHER 20,2/35/3.....	2
2	232 700	INNER RACE.....	1
3	232 652	NEEDLE BEARING 25X29X10.....	2
4	293 490	PRIMARY DRIVE ASSY.,..... REPLACE ONLY DRIVE GEAR WITH CLUTCH DRUM ASSY.,	1
5	259 885	INNER PLATE.....	1
6	259 905	FRICITION PLATE 2,6 MM..... FULL COATED	8
7	259 913	CLUTCH PLATE 1,25 MM.....	7
8	259 915	PLATE 1,5 MM.....	1
9	259 878	CLUTCH HUB.....	1
10	245 320	TAB WASHER NA20.....	1
11	242 605	HEX. NUT M18X1,5..... TORQUE 120 NM (1060 IN. LB.)	1
12	239 625	CLUTCH SPRING 34,1 MM..... CHANGE SPRINGS ONLY SETWISE	6
13	259 130	RETAINING PLATE.....	1
14	232 400	BALL BEARING 6001 C3, 12-28-8.....	1
15	259 140	THRUST HUB.....	1
16	945 750	LOCK WASHER A5.....	6
17	241 770	HEX. SCREW M5X25.....	6
18	235 767	IDLE GEAR ASSY. 26T.,.....	1
19	237 621	KICK START SHAFT.....	1
20	944 468	THRUST WASHER 20,5/30/1.....	2
21	945 660	RETAINING RING 20X1,2.....	1
22	239 762	KICK START SPRING.....	1
23	293 620	KICKSTART DRIVE ASSY.,..... REPLACE BOTH GEARS TOGETHER	1
24	227 880	THRUST WASHER 22,2/25,5/1.....	1

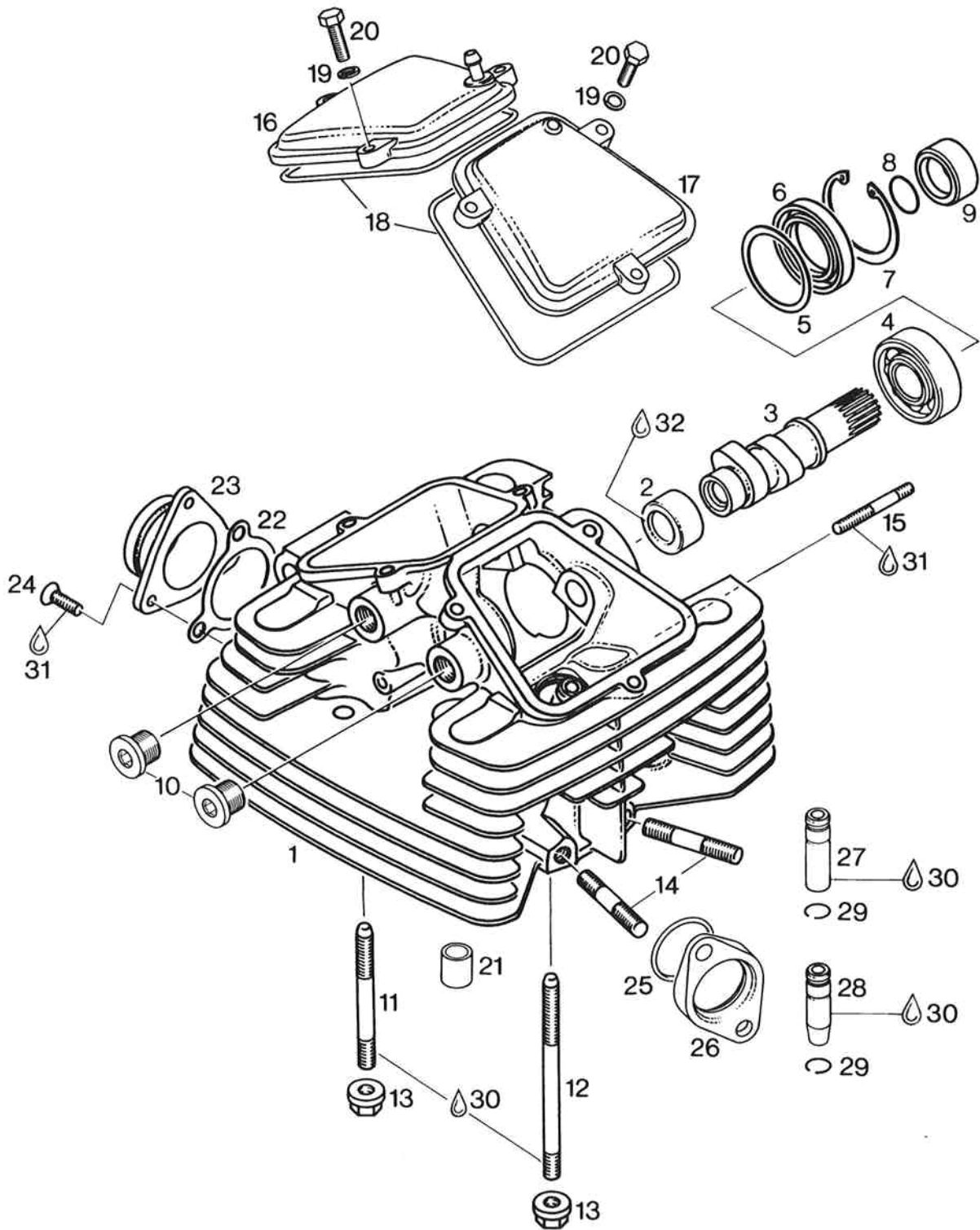
ILL. NO.	PART NO.	D E S C R I P T I O N	QTY.
25	247 600	SPACER 22,2/30/19.....	1
26	927 475	THRUST WASHER 22,5/30/0,5.....	1
26	927 475	THRUST WASHER 22,5/30/0,5.....	AS REQ
27	245 350	CIRCLIP 19,5X1.....	1
28 - 33	248 180	KICK START LEVER ASSY.,.....	1
28	248 175	KICK START LEVER.....	1
29	260 210	RUBBER SLEEVE.....	1
30	248 959	KICK START HUB.....	1
31	239 537	COMPRESSION SPRING 8 MM.....	1
32	232 440	BALL 5,556 MM.....	1
33	229 210	DOWEL TUBE 6X20.....	1
34	840 991	ALLEN SCREW M8X30.....	1
35	259 852	CLUTCH DRUM.....	1
36	243 340	RIVET 5X12.....	8
37	297 431	LOCTITE ANTI-SEIZE 10 GR.,..... TO PREVENT METAL GALLING	AS REQ
38	899 788	LOCTITE 648 GREEN, 5 GR.,..... HIGH STRENGTH BOND	AS REQ



CLUTCH COVER, ELECTRIC STARTER

ILL. NO.	PART NO.	D E S C R I P T I O N	QTY.
1 - 3	210 496	CLUTCH COVER ASSY.,..... UP TO ENGINE NO.	1
1 - 3	210 857	CLUTCH COVER ASSY.,..... AS OF ENGINE NO.	1
2	229 230	JOURNAL BOLT.....	1
3	224 230	CLUTCH CABLE TUBE.....	1
4	930 715	OIL SEAL 35X47X7.....	1
5	831 260	OIL SEAL 22X32X7.....	1
6	232 150	BALL 12 MM.....	3
7	259 185	RELEASE CAM, 30 DEGREE.....	1
8	240 310	ADJUSTMENT SCREW M8X19,5.....	1
9	942 670	HEX. NUT M8.....	1
10	227 945	THRUST WASHER 8,1/15/0,5.....	1
11	239 905	LEAF SPRING.....	1
12	927 571	WASHER 5,3..... ONLY FOR CLUTCH COVER 210 496	3
13	941 935	TAPTITE-SCREW M5X12..... ONLY FOR CLUTCH COVER 210 496	1
14	841 685	TAPTITE-SCREW M5X10..... ONLY FOR CLUTCH COVER 210 857	1
15	250 380	GASKET.....	1
16	230 415	GASKET RING A 6X10.....	1
17	241 811	ALLEN SCREW M6X35.....	9
18	840 880	ALLEN SCREW M6X30.....	2
19	241 816	ALLEN SCREW M6X40.....	1
20	230 400	O-RING 18X1,5.....	2
21	241 800	PLUG SCREW M18X1,5.....	2
22	827 261	THRUST WASHER 12,5/21,5/1.....	2
23	234 052	IDLE GEAR 81/15 T.,.....	1

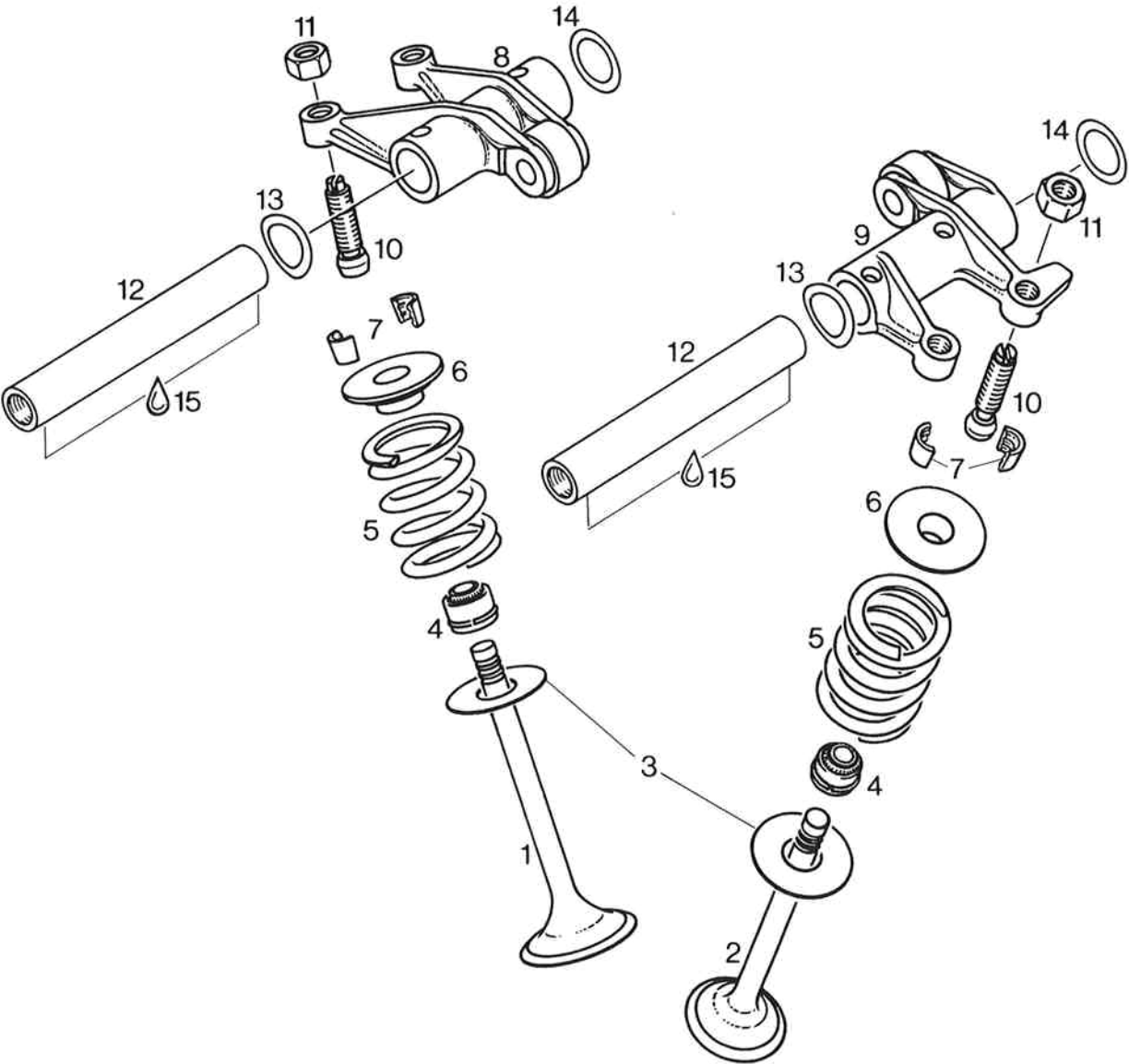
ILL. NO.	PART NO.	D E S C R I P T I O N	QTY.
24	212 960	STARTER DRIVE COVER..... BLACK PAINTED	1
25	230 310	O-RING 114-2.....	1
26	840 511	ALLEN SCREW M5X16.....	4
27	293 151	ELECTRIC STARTER ASSY.,.....	1
28	251 910	DISTANCE BLOCK.....	1
29	945 751	LOCK WASHER A6.....	2
30	241 821	ALLEN SCREW M6X45.....	1
31	240 331	ALLEN SCREW M6X55.....	1
32	230 905	GASKET RING A 16X20X1.....	1
33	240 230	PLUG SCREW M16X1,5.....	1
34	297 386	SILASTIC 732 RTV, 100 GR.,.....	AS REQ
35	899 785	LOCTITE 221 VIOLET 10 CC.,..... LOW STRENGTH BOND	AS REQ
36	 BP-ENERGREASE LS 3	AS REQ



CYLINDER HEAD, CAM SHAFT, VALVE COVER

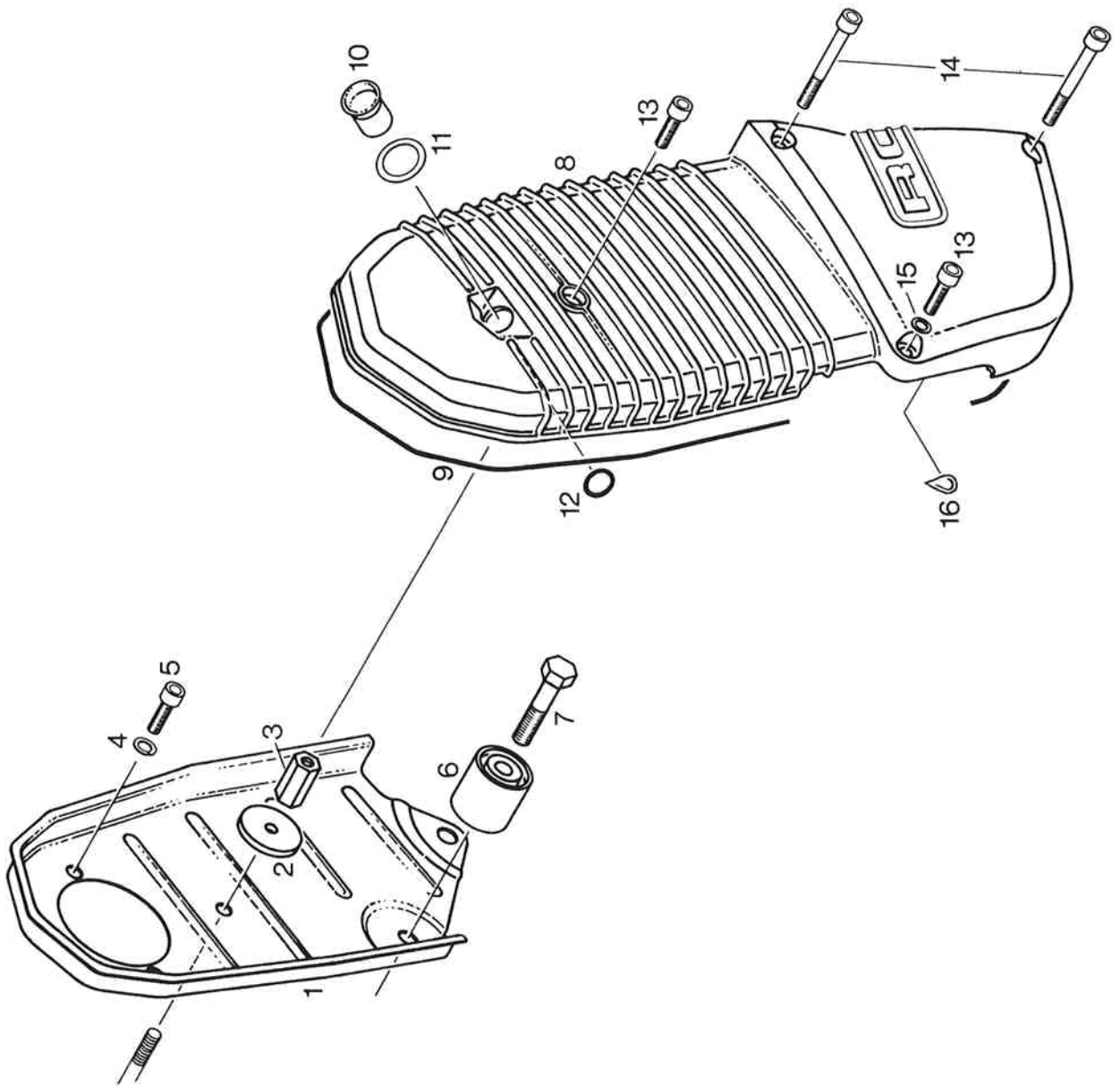
ILL. NO.	PART NO.	D E S C R I P T I O N	QTY.
1	223 299	CYLINDER HEAD ASSY.,.....	1
2	232 920	NEEDLE BUSHING 22X28X12.....	1
3	237 667	CAM SHAFT 229 DEGREES.....	1
4	932 432	BALL BEARING 6204 C3, 20-47-14.....	1
5	927 222	SHIM 38/46,8/1,0.....	1
6	850 055	OIL SEAL 30X47X7/7,5.....	1
7	945 690	RETAINING RING 47X1,75.....	1
8	230 405	O-RING 18X1,5.....	1
9	247 420	DISTANCE SLEEVE 20/30/13.....	1
10	240 230	PLUG SCREW M16X1,5.....	2
11	240 415	STUD M8X94.....	1
12	240 420	STUD M8X119.....	1
13	242 700	COLLAR HEX. NUT M8..... TIGHTENING TORQUE 20 NM (170 IN.LB.)	2
14	240 365	STUD M8X50.....	4
15	940 000	STUD M6X40/11.....	1
16	212 546	VALVE COVER ASSY.,..... FOR INTAKE	1
17	212 543	VALVE COVER A..... FOR OUTLET	1
18	230 860	O-RING 107-2,5.....	2
19	945 751	LOCK WASHER A6.....	6
20	940 561	HEX. SCREW M6X20.....	6
21	229 160	DOWEL 13,8X15.....	2
22	230 010	GASKET.....	1
23	267 857	INTAKE FLANGE.....	1
24	941 041	COUNTERSUNK SCREW M6X16.....	3
25	230 080	COPPER GASKET RING 26X32.....	2

ILL. NO.	PART NO.	D E S C R I P T I O N	QTY.
26	273 851	EXHAUST FLANGE.....	2
27	253 116	EXHAUST VALVE GUIDE..... FOR REPAIR	2
28	253 117	INLET VALVE GUIDE..... FOR REPAIR	2
29	245 440	CIRCLIP 12.....	4
30	297 433	MOLYKOTE G-N 50 GR., SLIDE PASTE.....	AS REQ
31	899 785	LOCTITE 221 VIOLET 10 CC.,..... MEANS OF SECURING WEAK	AS REQ
32	297 386	SILASTIC 732 RTV, 100 GR.,.....	AS REQ



VALVES, ROCKER ARM, ADJUSTMENT SCREWS

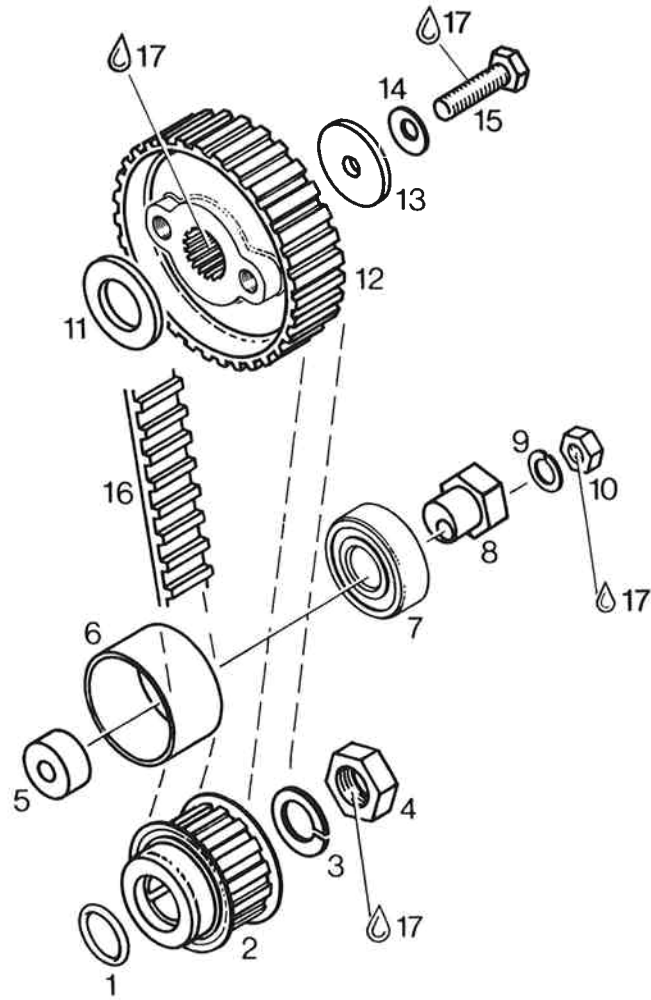
ILL. NO.	PART NO.	D E S C R I P T I O N	QTY.
1	253 160	INTAKE VALVE 30 MM.....	2
2	253 170	EXHAUST VALVE 27 MM.....	2
3	227 980	THRUST WASHER 12,2/29,5/1.....	4
4	230 810	VALVE STEM SEAL.....	4
5	239 780	VALVE SPRING 36,6 MM.....	4
6	253 101	VALVE SPRING RETAINER.....	4
7	253 090	VALVE COTTER.....	8
8	253 305	ROCKER ARM ASSY.,..... FOR INTAKE	1
9	253 335	ROCKER ARM ASSY.,..... FOR EXHAUST	1
10	240 205	ADJUSTMENT SCREW M7 ASSY.,.....	4
11	242 591	HEX. NUT M7.....	4
12	253 050	ROCKER ARM SHAFT.....	2
13	227 950	SPRING WASHER 14,3/20/0,5..... FOR MAGNETO SIDE	2
14	227 955	THRUST WASHER 14,3/20/0,5..... FOR CLUTCH SIDE	2
15	297 433	MOLYKOTE G-N 50 GR., SLIDE PASTE.....	AS REQ



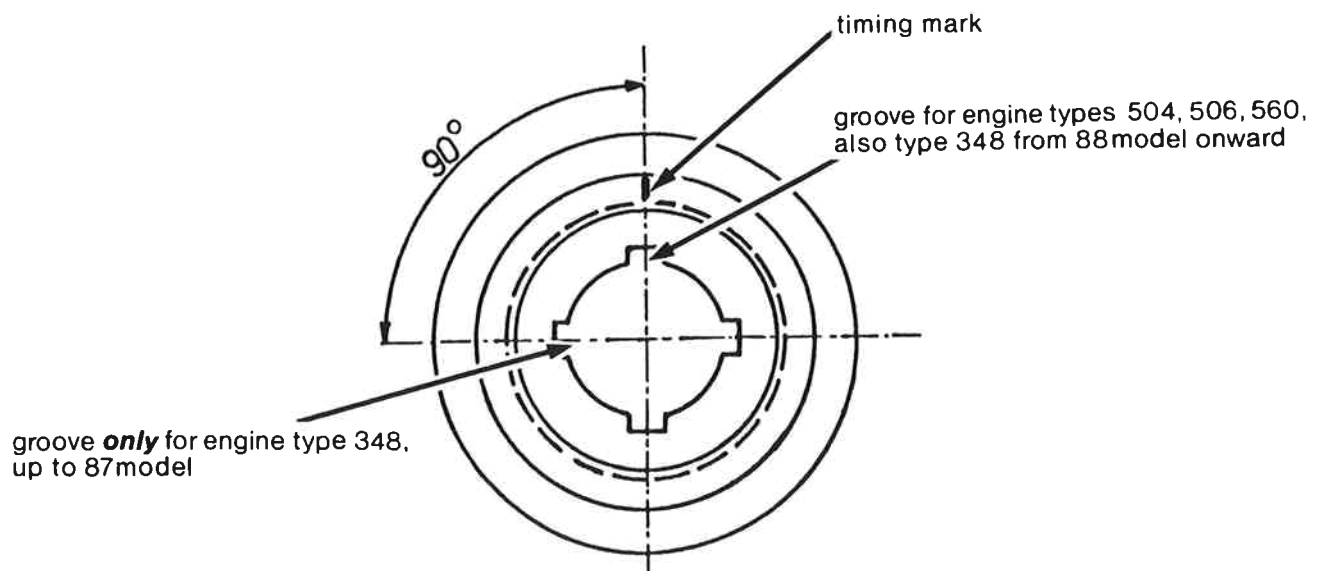
TIMING BELT HOUSING, TIMING BELT COVER

CONFIGURATION W I T H ELECTRIC STARTER

ILL. NO.	PART NO.	D E S C R I P T I O N	QTY.
1	212 527	TIMING BELT HOUSING.....	1
2	227 920	WASHER 6,4/30/3.....	1
3	242 680	DISTANCE NUT M6X22.....	1
4	945 751	LOCK WASHER A6.....	2
5	241 930	ALLEN SCREW M6X20.....	2
6	232 130	GUIDE PULLEY 28X27X30.....	1
7	240 281	HEX. SCREW M8X50.....	1
8	212 955	TIMING BELT COVER.....	1
9	230 852	O-RING 2,5X820.....	1
10	260 550	LENS.....	1
11	250 091	GASKET RING 14/19/0,5.....	1
12	430 020	O-RING 9,3X2,4.....	1
13	840 401	ALLEN SCREW M6X22.....	2
14	241 761	ALLEN SCREW M6X50.....	2
15	230 415	GASKET RING A 6X10.....	1
16	297 386	SILASTIC 732 RTV, 100 GR.,.....	AS REQ

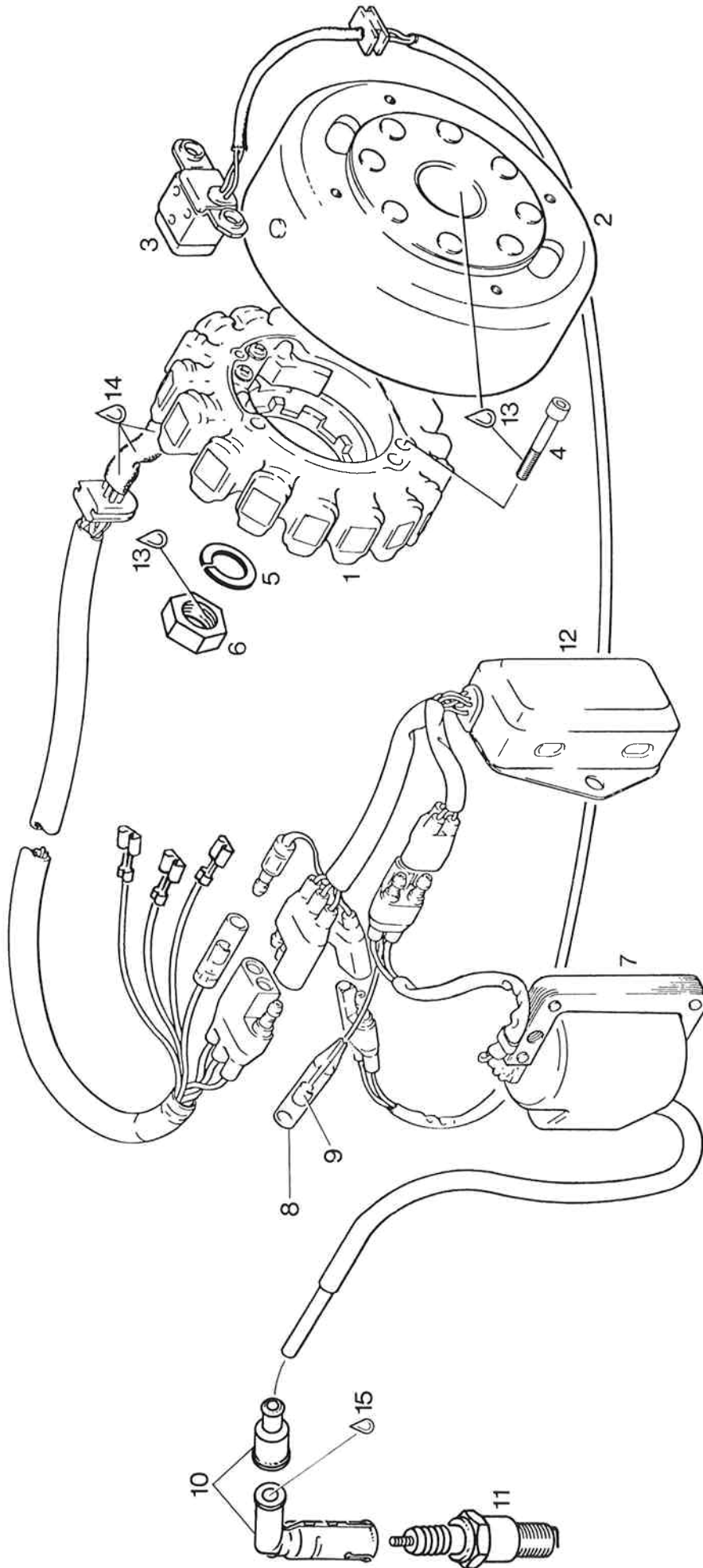


Front view



CAM SHAFT DRIVE

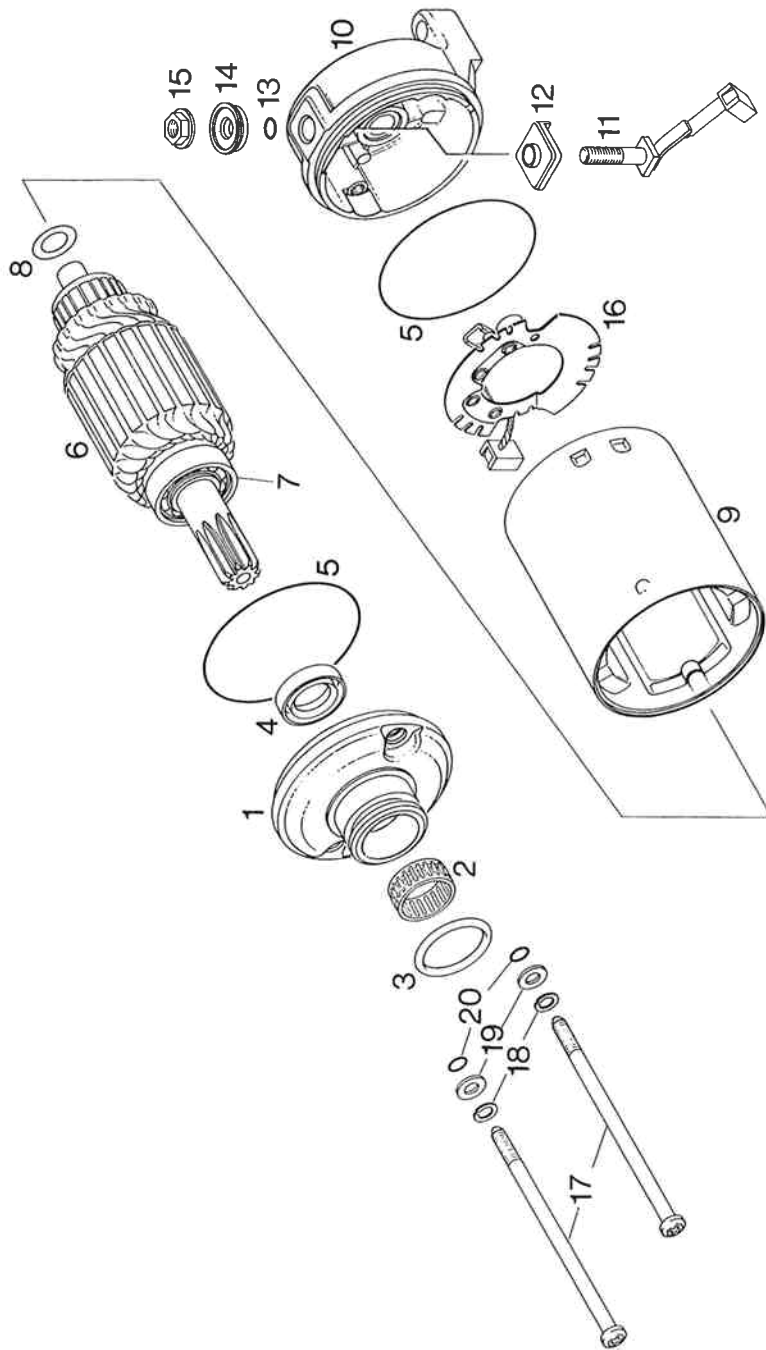
ILL. NO.	PART NO.	D E S C R I P T I O N	QTY.
1	230 890	O RING 17-2,5.....	1
2	253 017	TIMING PULLEY ASSY. 15T.,.....	1
3	945 756	LOCK WASHER 16.....	1
4	242 710	HEX. NUT M16X1,5..... TIGHTENING TORQUE 150 NM (1330 IN.LB.)	1
5	247 430	SPACER 8,4/24/11.....	1
6	280 030	GUIDE PULLEY.....	1
7	932 037	BALL BEARING 6203-2RS1, 17-40-12.....	1
8	280 020	TENSIONER ECCENTER.....	1
9	945 752	LOCK WASHER A8.....	1
10	242 206	HEX. NUT M8..... TIGHTENING TORQUE 15 NM (130 IN.LB.)	1
11	227 600	THRUST WASHER 20,2/35/3.....	1
12	253 023	TIMING PULLEY 30 T.,.....	1
13	227 930	WASHER 8,4/32/3.....	1
14	245 460	SPRING WASHER 8.....	1
15	940 485	HEX.SCREW M8X30..... TIGHTENING TORQUE 35 NM (310 IN.LB.)	1
16	280 015	TIMING BELT 9,525X19X86.....	1
17	899 785	LOCTITE 221 VIOLET 10 CC.,..... LOW STRENGTH BOND	AS REQ



IGNITION UNIT 12V 190W

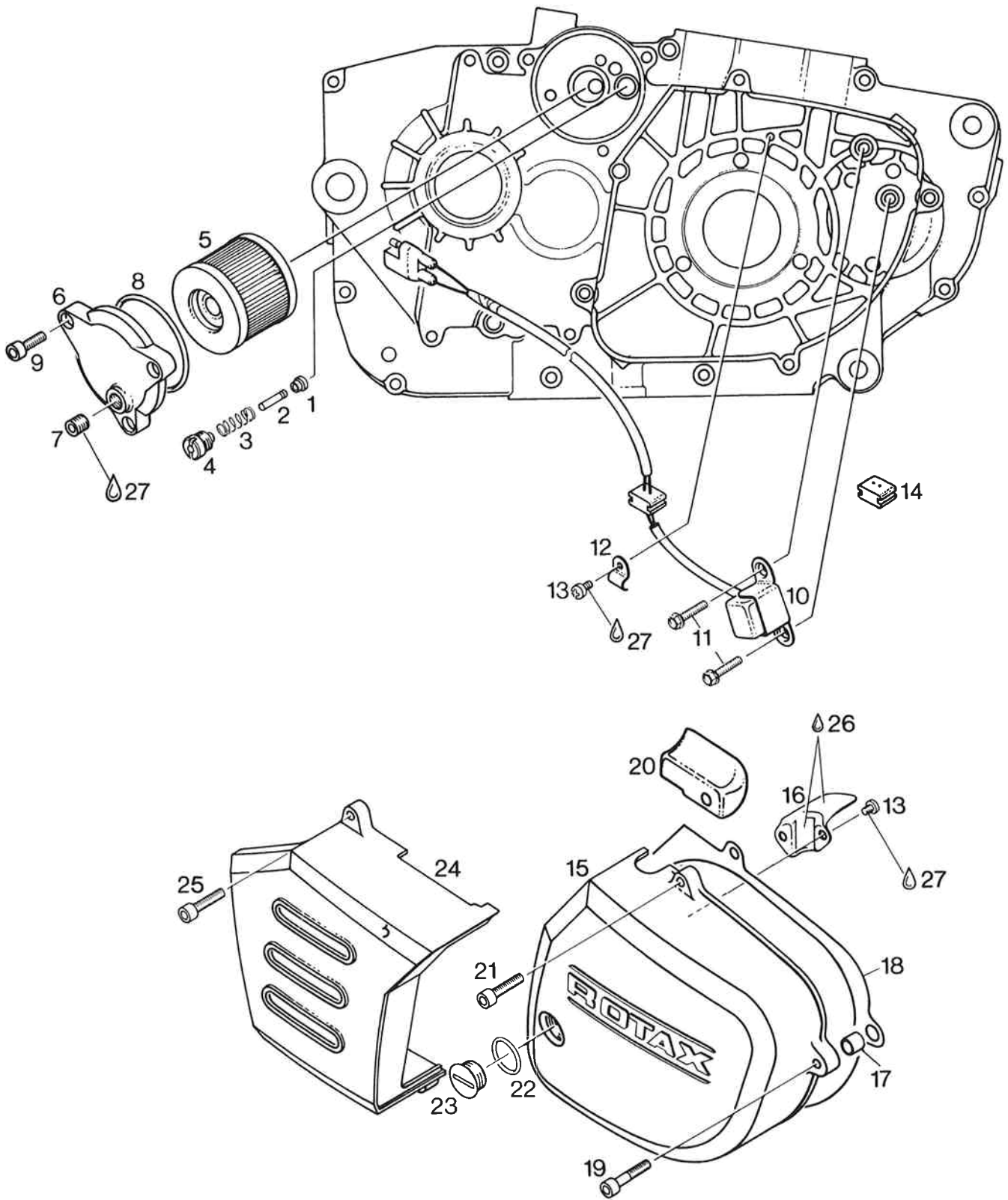
ILL. NO.	PART NO.	D E S C R I P T I O N	QTY.

1 - 3	293 123	IGNITION UNIT 12V 190W ASSY.,.....	1
1 - 2	293 128	STATOR W. MAGN. FLYWHEEL ASSY.,..... STATOR AND MAGNETO FLYWHEEL MUST BE EXCHANGED ONLY TOGETHER	1
3	264 750	TRIGGER COIL.....	1
4	241 816	ALLEN SCREW M6X40.....	3
5	945 757	LOCK WASHER 18.....	1
6	942 220	HEX. NUT M18X1,5..... TIGHTENING TORQUE 120 NM (1050 IN.LB.)	1
7 - 10	264 737	IGNITION COIL ASSY.,.....	1
8	964 070	INSULATION SHEATH.....	1
9	964 067	FASTON CONNECTOR 3,96.....	1
10	264 861	SHIELDED SPARK PLUG CONNECTOR.....	1
11	297 540	SPARK PLUG 12 MM..... TIGHTENING TORQUE 20 NM (180 IN.LB.), COLD ENGINE	1
12	264 740	AMPLIFIER-BOX.....	1
13	899 785	LOCTITE 221 VIOLET 10 CC.,..... LOW STRENGTH BOND	AS REQ
14	297 386	SILASTIC 732 RTV, 100 GR.,.....	AS REQ
15	897 330	LITHIUM-BASE GREASE, 250 GR.,..... TO PREVENT LEAKAGE CURRENT	AS REQ



SINGLE PARTS FOR ELECTRIC STARTER 293 151

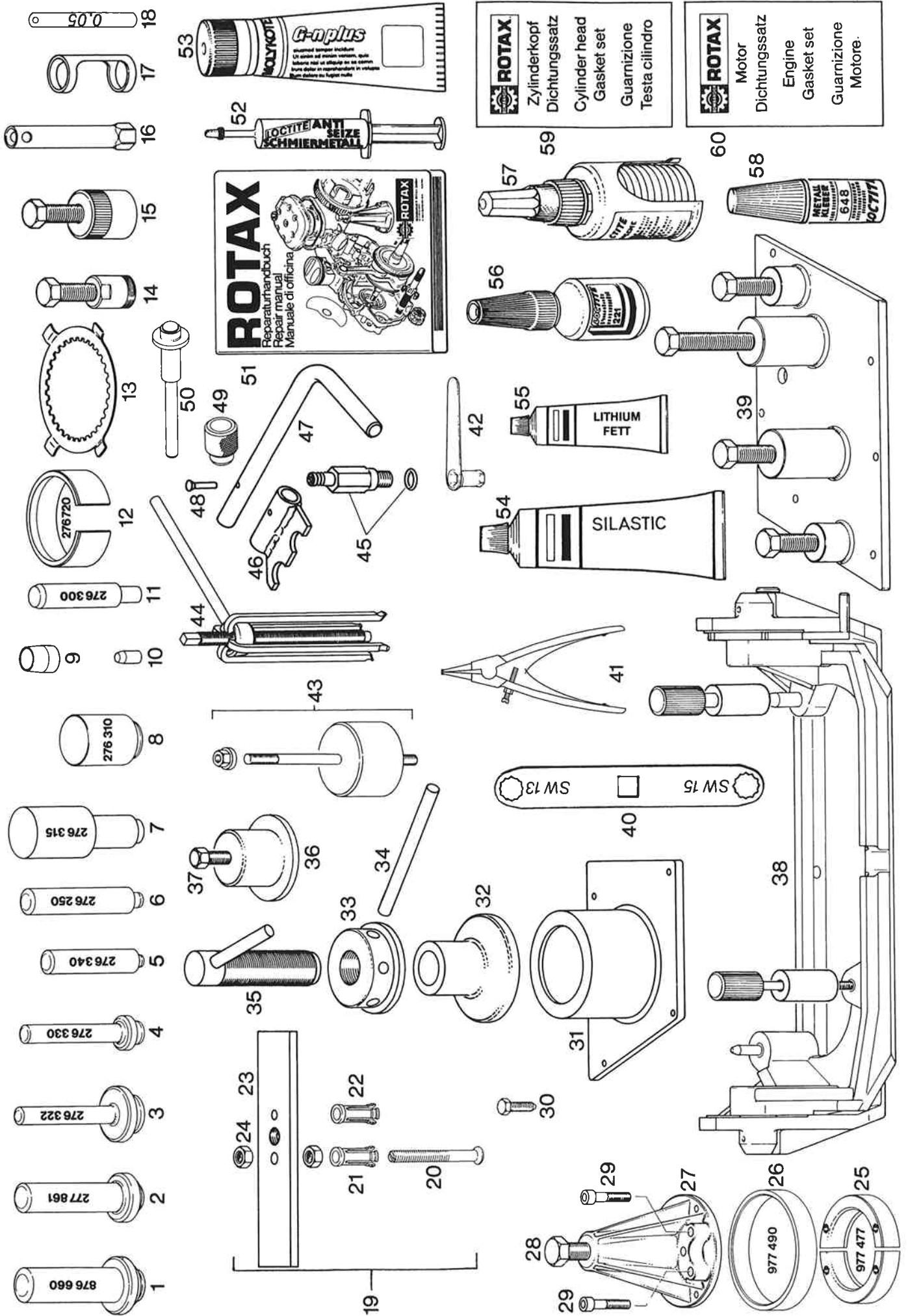
ILL. NO.	PART NO.	D E S C R I P T I O N	QTY.
1	264 135	SUPPORT..... SPARE PART VERSION, FOR CONFIGURATION WITH NEEDLE BUSHING 232 250	1
2	232 250	NEEDLE BUSHING 15X21X12..... SPARE PART VERSION, FOR CONFIGURATION WITH SUPPORT 264 135	1
3	250 140	O-RING 24,4X3,1.....	1
4	250 130	OIL SEAL 15X24X5.....	1
5	850 500	O-RING 62-1,5.....	2
6	264 140	ROTOR ASSY.,.....	1
7	232 260	BALL BEARING 6002 Z / 15-32-9.....	1
8	827 600	SHIM.....	AS REQ
9	264 150	STATOR YOKE ASSY.,.....	1
10	264 170	ROTOR SUPPORT ASSY.,.....	1
11	264 180	CARBON BRUSH ASSY.,.....	1
12	260 810	ISOLATING BUSHING.....	1
13	230 530	O-RING 6X1,7.....	1
14	260 800	ISOLATING BUSHING.....	1
15	242 780	COMBINED NUT M6.....	1
16	866 890	BRUSH HOLDER ASSY.,.....	1
17	241 130	CYL. SCREW M5X113.....	2
18	945 750	LOCK WASHER A5.....	2
19	827 660	WASHER 5,3/10/1,5.....	2
20	850 510	O-RING 4,7X1,4.....	2



VALVE, OIL FILTER ELEMENT, IGNITION COVER

ILL. NO.	PART NO.	D E S C R I P T I O N	QTY.
1	260 570	PRESSURE RETAINING VALVE.....	1
2	256 150	VALVE PIN.....	1
3	239 815	COMPRESSION SPRING 13,0 MM.....	1
4	256 170	VALVE PIN SCREW.....	1
5	256 185	OIL FILTER ELEMENT.....	1
6	212 620	OIL FILTER COVER.....	1
7	240 480	PLUG SCREW 1/8-27NPT.....	1
8	230 920	O-RING 60-2,5.....	1
9	241 930	ALLEN SCREW M6X20.....	3
10	264 750	TRIGGER COIL.....	1
11	240 580	TAPTITE SCREW M6X16.....	2
12	251 890	CABLE CLAMP.....	1
13	240 195	TAPTITE-SCREW M4X8.....	3
14	260 760	RUBBER PLUG.....	1
15	212 515	IGNITION COVER.....	1
16	251 880	CABLE HOLDER, INNER.....	1
17	229 140	DOWEL 9,8X10.....	2
18	250 391	GASKET.....	1
19	840 880	ALLEN SCREW M6X30.....	2
20	251 885	CABLE HOLDER, OUTER.....	1
21	840 861	ALLEN SCREW M6X25.....	2
22	230 400	O-RING 18X1,5.....	1
23	241 800	PLUG SCREW M18X1,5.....	1
24	212 610	CHAIN COVER.....	1
25	840 861	ALLEN SCREW M6X25.....	3
26	297 386	SILASTIC 732 RTV, 100 GR.,.....	AS REQ

ILL. NO.	PART NO.	D E S C R I P T I O N	QTY.
27	899 785	LOCTITE 221 VIOLET 10 CC.,..... MEANS OF SECURING WEAK	AS REQ



ROTAX
 Zylinderkopf
 Dichtungssatz
 Cylinder head
 Gasket set
 Guarnizione
 Testa cilindro

ROTAX
 Motor
 Dichtungssatz
 Engine
 Gasket set
 Guarnizione
 Motore.

LOCITE
 ANTI
 SEIZE
 SCHMIERMETALL

ROTAX
 Reparaturhandbuch
 Repair manual
 Manuale di officina

**LITHIUM
 FETT**

SILASTIC

**METAL
 KLEBER
 648
 OCTITE**

SW 13 MS SW 15 MS

977 490 977 477

REPAIR TOOLS, GASKET SETS

ILL. NO.	PART NO.	D E S C R I P T I O N	QTY.

1	876 660	INSERTION JIG ASSY.,..... FOR OIL SEAL 850 055, CRANKSHAFT MAGNETO SIDE	1
2	277 861	INSERTION JIG ASSY.,..... FOR OIL SEAL 230 395, MAIN SHAFT	1
3	276 322	INSERTION JIG ASSY.,..... FOR OIL SEAL 930 715, CRANKSHAFT CLUTCH SIDE	1
4	276 330	INSERTION JIG ASSY.,..... FOR OIL SEAL 831 260, KICK START SHAFT	1
5	276 340	INSERTION JIG..... FOR OIL SEAL 230 870, OIL PUMP SHAFT	1
6	276 250	INSERTION JIG..... FOR OIL SEAL 230 690, DEKOMPRESSOR SHAFT	1
7	276 315	INSERTION JIG..... FOR NEEDLE BUSHING 232 920, CAM SHAFT	1
8	276 310	INSERTION JIG..... FOR OIL SEAL 850 055, CAM SHAFT	1
9	277 970	GUIDE SLEEVE..... FOR MAIN SHAFT	1
10	276 450	GUIDE SLEEVE..... FOR OIL PUMP SHAFT	1
11	276 300	GUIDE BOLT..... FOR PISTON PIN	1
12	276 720	PISTON RING SPANNER, 79,5 MM..... TO MOUNT PISTON IN CYLINDER	1
13	277 887	CLUTCH HUB LOCKING TOOL.....	1
14	276 445	PULLER ASSY.,..... FOR TIMING PULLEY 15 T.	1
15	277 807	PULLER ASSY. M35X1,5..... FOR MAGNETO FLYWHEEL	1
16	276 280	SPARK PLUG WRENCH 18 MM.....	1
17	276 470	VALVE SPRING MOUNTING DEVICE.....	1
18	276 295	VALVE FEELER GAUGE 0,05 MM.....	1

ILL. NO.	PART NO.	DESCRIPTION	QTY.
19 - 24	276 360	PULLER ASSY.,..... FOR BEARINGS, CLUTCH SHAFT AND BALANCER SHAFT	1
20	276 380	BOLT M10.....	1
21	276 370	EXTRACTOR SLEEVE..... FOR BALL-BEARING 6303, CLUTCH SHAFT	1
22	276 375	EXTRACTOR SLEEVE..... FOR BEARING 6304, BALANCER SHAFT	1
23	276 390	SUPPORT PLATE.....	1
24	242090	HEX. NUT M10.....	2
25	977 477	RING HALF..... FOR BALL BEARING 6207 E	2
26	977 490	RING..... FOR RING HALVES	1
27 - 28	876 298	PULLER ASSY.,..... FOR BALL BEARINGS	1
28	940 755	HEX. SCREW M16X1,5X150.....	1
29	840 681	ALLEN SCREW M8X40..... FOR PULLER ASSY. 876 298	4
30	241 965	CRANKSHAFT FIXATION SCREW M8X30..... FOR CRANKSHAFT	1
31	276 535	PULLER PLATE ASSY.,..... FOR CRANKSHAFT DISASSEMBLY	1
32	276 560	PULLER BELL..... FOR CRANKSHAFT	1
33	276 550	PULLER RING.....	1
34	276 155	BOLT 12X250.....	1
35	276 127	PULL-IN SPINDLE M18X1,5 ASSY.,..... FOR CRANKSHAFT	1
36 - 37	277 087	PULLER ASSY.,..... FOR BALANCER GEAR, CONFIGURATION WITH BALANCER SHAFT 18 MM	AS REQ
37	841 700	HEX. SCREW M10X60.....	1
38	277 917	TRESTLE ASSY.,..... FOR ENGINE TYPES 348 - 604	1

ILL. NO.	PART NO.	DESCRIPTION	QTY.
39	276 436	PULLER PLATE ASSY., FOR CRANKCASE HALVES	1
40	277 070	RING WRENCH 13/15 FOR TIGHTENING TORQUE WRENCH	1
41	277 290	CIRCLIP PLIERS ZGS 2 FOR SNAPPING, TRANSMISSION	1
42	276 040	WRENCH 11 MM FOR CLUTCH PLAY ADJUSTMENT	1
43	276 405	CAMSHAFT PULLER ASSY.	1
44	277 180	BALL BEARING PULLER SET FOR BEARING: 6006, 6203, 6300, 6203 E, 6007, 6204, 6301, 6302, 6204 E, 6205, 6303 AND 6304	1
45	276 855	PRESSURE NIPPLE ASSY. FOR COMPRESSED AIR CONNECTING	1
46	276 880	VALVE SPRING SPANNER ASSY.	1
47	276 990	SPRING SPANNER LEVER	1
48	243 360	RIVET 5X25	1
49 - 50	877 017	CIRCLIP INSTALLATION TOOL ASSY. FOR FITTING OF PISTON PIN CIRCLIPS 22 MM (0,866 INCH)	1
49	877 022	CIRCLIP INSTALLATION SLEEVE 22MM	1
50	877 012	CIRCLIP INSTALLATION PUSHER 22 MM	1
51	299 035	REPAIR MANUAL ASSY. FOR ENGINE TYPE 348 E	1
52	297 431	LOCTITE ANTI-SEIZE 10 GR. TO PREVENT METAL GALLING	1
53	297 433	MOLYKOTE G-N 50 GR., SLIDE PASTE	1
54	297 386	SILASTIC 732 RTV, 100 GR.	1
55	897 330	LITHIUM-BASE GREASE, 250 GR. TO PREVENT LEAKAGE CURRENT	1
56	899 785	LOCTITE 221 VIOLET 10 CC. LOW STRENGTH BOND	1
57	899 784	LOCTITE 574 ORANGE 50 CC. SEALING COMPOUND	1

ILL. NO.	PART NO.	D E S C R I P T I O N	QTY.
58	899 788	LOCTITE 648 GREEN, 5 GR.,..... HIGH STRENGTH BOND	1
59	295 301	GASKET SET, CYLINDER HEAD..... FOR CYLINDER HEAD REPAIR, 'GILNISIL'	1
60	295 300	GASKET SET..... FOR THE ENGINE	1